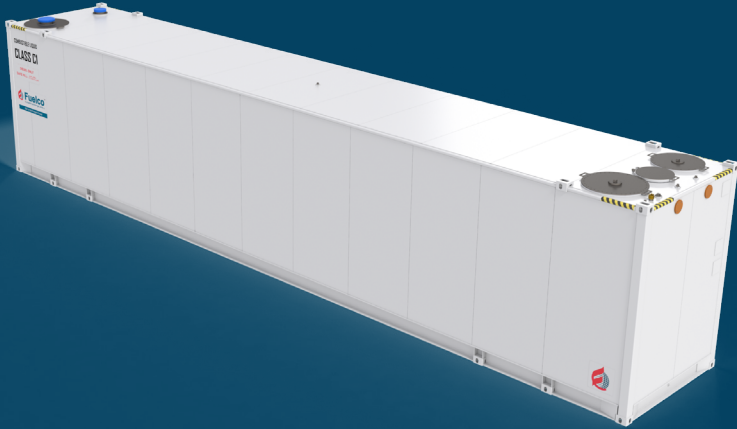




## Klassic - LTKL 100



### Self banded double wall design with

- Fluid level dipstick for tank and interstitial space
- Vent pipe for tank and interstitial space
- Suction foot valve, overfill protection and electronic overfill alarm
- Corner container lock castings for ease of transport
- Access manway
- Warranty - 5 years structural, 1 year on valves (conditions apply)

### Options include:

- Inspection ladder
- Clip-on pump bay
- Dispensing and fuel management

## Specifications

### Description

Safe Fill, litres	94,500
Length, mm	14,630
Width, mm	2,438
Height, mm	3,200
Weight (empty) kg	18,600
Vent Pipe	Standard
Fluid Level Dipstick	Standard
Compliance	AS1940, AS1692, AS1657, UL142



*Disclaimer: Information and photographs shown are for marketing purposes only. Actual product may vary to images shown due to continual improvement processes, design changes and optional extras*

## GLOBAL CONTACTS

MIDDLE EAST : +971 50 719 7137 | ASIA : +61 430 531 448 | AFRICA : +61 437 022 349

SOUTH AMERICA: +56 9 9219 1598 | CENTRAL AMERICA: +50 5 2277 3216